



PREMIUM

# MEATS

*Beef • Pork • Poultry • Specialty Meats*

# RIVER CITY MEATS



**CLICK HERE**  
To learn more  
about River City  
Meats

## River City Meats

With over 80 years of food industry experience, Superior Foods Company has established itself as a premium distributor of 'center of the plate' meats and seafood. Being focused on providing the finest quality products with unmatched consistency has been the top priority from day one. Our customers expect the highest standards from us and our products, and we would not have it any other way. In 1982, we set out to be the best in class in offering fresh beef and other meat items to our food service customers. Our customized approach has allowed us to create individualized solutions for over 30+ years now. Through this, our River City Meats (RCM) brand was born - bold, intentional, and exceptional.

Item Code	Description	Pack Size
88106	AMERICAN WAGYU BLACK BALL TIP SIZZLER STEAKS	1 : 10 LB
89145	SIGNATURE CHOICE RIBEYE STEAK	1 : 10 LB
89013	CHOICE BISTRO FILET STEAKS	1 : 10 LB

## Snake River Farms American Wagyu Beef Custom Cuts

Item Code	Brand	Description	Pack Size
88106	RIVER CITY MEATS	WAGYU BLACK BALL TIP SIZZLER STEAKS	1 : 10 LB
5151	RIVER CITY MEATS	KOBE BLACK HANGER STEAKS	1 : 10 LB
89029	RIVER CITY MEATS	WAGYU BLACK FLAT IRON STEAKS - SPECIAL ORDER	1 : 10 LB
89121	RIVER CITY MEATS	WAGYU BLACK TOMAHAWK STEAKS - SPECIAL ORDER	1 : 10 LB
88310	RIVER CITY MEATS	WAGYU BLACK TENDERLOIN STEAKS, CENTER-CUT	1 : 10 LB
88463	RIVER CITY MEATS	WAGYU BLACK RIBEYE STEAKS, TAIL-OFF	1 : 10 LB
88232	RIVER CITY MEATS	WAGYU BLACK TOP BUTT STEAKS	1 : 10 LB
88100	RIVER CITY MEATS	WAGYU GOLD NY STRIP STEAKS, CENTER-CUT	1 : 10 LB
88105	RIVER CITY MEATS	WAGYU GOLD ZABUTON STEAKS	1 : 10 LB
88235	RIVER CITY MEATS	WAGYU GOLD TOP BUTT STEAKS	1 : 10 LB
89135	RIVER CITY MEATS	WAGYU GOLD FLANK STEAKS	1 : 10 LB

## Double R Ranch Signature Beef (Top 1/3 of Choice Grade)

Item Code	Brand	Description	Pack Size
88400	RIVER CITY MEATS	NY STRIP STEAKS	1 : 10 LB
89122	RIVER CITY MEATS	BONE-IN RIBEYE STEAKS	1 : 10 LB
88481	RIVER CITY MEATS	RIBEYE STEAKS, TAIL-OFF	1 : 10 LB
89145	RIVER CITY MEATS	RIBEYE STEAKS, TAIL-ON	1 : 10 LB
88318	RIVER CITY MEATS	TENDERLOIN STEAKS, CENTER-CUT	1 : 10 LB
88240	RIVER CITY MEATS	TOP BUTT STEAKS, CENTER-CUT	1 : 10 LB

## Choice Angus Beef Custom Cuts

Item Code	Brand	Description	Pack Size
88178	RIVER CITY MEATS	TENDERLOIN FILET STEAKS	1 : 10 LB
89115	RIVER CITY MEATS	BONE-IN NY STRIP STEAKS	1 : 10 LB
89129	RIVER CITY MEATS	PORTERHOUSE STEAKS	1 : 10 LB
89142	RIVER CITY MEATS	T-BONE STEAKS	1 : 10 LB
88234	RIVER CITY MEATS	TOP BUTT B-BALL CUT STEAKS	1 : 10 LB

## Pork Custom Cuts

Item Code	Brand	Description	Pack Size
88501	RIVER CITY MEATS	BONELESS PORK CHOPS	1 : 10 LB
6825	RIVER CITY MEATS	TOMAHAWK PORK CHOPS	1 : 10 LB
89132	RIVER CITY MEATS	PORTERHOUSE PORK CHOPS	1 : 10 LB
89156	RIVER CITY MEATS	BONE-IN RIB PORK CHOP, CENTER-CUT	1 : 10 LB
89256	RIVER CITY MEATS	PORK CUTLETS	1 : 10 LB
90663	RIVER CITY MEATS	PORK LOIN, FRENCHED	1 : 6 LB
2369	RIVER CITY MEATS	PORK RACK CROWN ROAST, FRENCHED	1 : 8 LB

## Burgers

Item Code	Brand	Description	Pack Size
89092	RIVER CITY MEATS	SLIDER GROUND BEEF PATTIES	84 : 2 OZ
89095	RIVER CITY MEATS	6/1 GROUND BEEF PATTIES	72 : 2.67 OZ
89099	RIVER CITY MEATS	4/1 GROUND BEEF PATTIES	48 : 4 OZ
89098	RIVER CITY MEATS	3/1 GROUND BEEF PATTIES	36 : 5.3 OZ
89094	RIVER CITY MEATS	7 OZ GROUND BEEF PATTIES	30 : 7 OZ
89097	RIVER CITY MEATS	2/1 GROUND BEEF PATTIES	24 : 8 OZ
89065	RIVER CITY MEATS	7 OZ SMOKEY GROUND BEEF PATTIES	30 : 7 OZ
89088	RIVER CITY MEATS	7 OZ AMERICAN WAGYU BEEF BLEND BURGER	30 : 7 OZ
89082	RIVER CITY MEATS	7 OZ GROUND CHUCK PATTIES	30 : 7 OZ
89228	RIVER CITY MEATS	GROUND BEEF 3 OZ PUCKS	54 : 3 OZ

**RIVER CITY MEATS**

- Cut-To-Order Program
- Value-Added Items
- Retail Packaged Meats

**CLICK HERE**  
To learn more  
about River City  
Meats

# BEEF



## Snake River Farms

initially crossbred Wagyu with high-quality cattle in the late 1980s, appreciating its rich flavor and exquisite marbling. Since then, they have continuously perfected this coveted combination. Achieving such excellence requires meticulous precision, genetic expertise, and an unwavering commitment to constant improvement and innovation. With complete control over their supply chain, they oversee the ranches, processing facility, and customer care team. As trailblazers, they prioritize the right way over convenience, resulting in extraordinary, velvety beef enjoyed in top restaurants globally.

**CLICK HERE**  
To learn more  
about Snake River  
Farms and Agri  
Beef

Item Code	Description	Pack Size
97159	BEEF TENDERLOIN PISMO WAGYU BLACK	2 : 5 LB
97462	BEEF ZABUTON CHUCK WAGYU GOLD	3 : 8 LB
90120	BEEF BALL TIPS WAGYU BLACK	12 : 6 LB

## American Wagyu Gold & Black Primals

Item Code	Brand	Description	Pack Size
97349	SNAKE RIVER FARMS	BEEF FLANK, GOLD	8 : 5 LB
90116	SNAKE RIVER FARMS	BEEF STRIPLOIN OX1, GOLD	2 : 16 LB
2998	SNAKE RIVER FARMS	BEEF TOP BUTT, CENTER-CUT, GOLD	4 : 8 LB
97462	SNAKE RIVER FARMS	BEEF ZABUTON CHUCK, GOLD	3 : 8 LB
3532	SNAKE RIVER FARMS	BEEF HANGING TENDERS, BLACK	4 : 5 LB
3647	SNAKE RIVER FARMS	BEEF RIBEYE ROLL, BLACK	2 : 15 LB
90120	SNAKE RIVER FARMS	BEEF BALL TIPS, BLACK	4 : 5 LB
97159	SNAKE RIVER FARMS	BEEF TENDERLOIN PISMO, BLACK	2 : 5 LB
90101	SNAKE RIVER FARMS	BEEF TENDERLOIN PISMO, GOLD	2 : 6 LB

## Prime Beef Primals

Item Code	Brand	Description	Pack Size
97157	AB FOODS	BEEF BRISKET	4 : 17 LB
95630	GREATER OMAHA	BEEF STRIPLOIN OX1	6 : 13.5 LB
95620	GREATER OMAHA	BEEF RIBEYE BNLS, 17UP	5 : 18 LB
95610	GREATER OMAHA	BEEF TENDERLOIN PISMO, 5 UP	12 : 6.5 LB
1154	MEATS BY LINZ	BONE-IN BEEF RIBEYE EXPORT, 19UP	2 : 19 LB

## Choice Angus Beef

Item Code	Brand	Description	Pack Size
90571	ST. HELENS BEEF	BONE-IN BEEF RIBEYE EXPORT, 17UP	3 : 20 LB
90102	ST. HELENS BEEF	LIP-ON BEEF RIBEYE	4 : 17 LB
90044	ST. HELENS BEEF	BEEF SHORT LOIN, XT OX1	3 : 22 LB
90110	ST. HELENS BEEF	BEEF STRIPLOIN, OX1	5 : 13 LB

## Choice Angus Beef continued

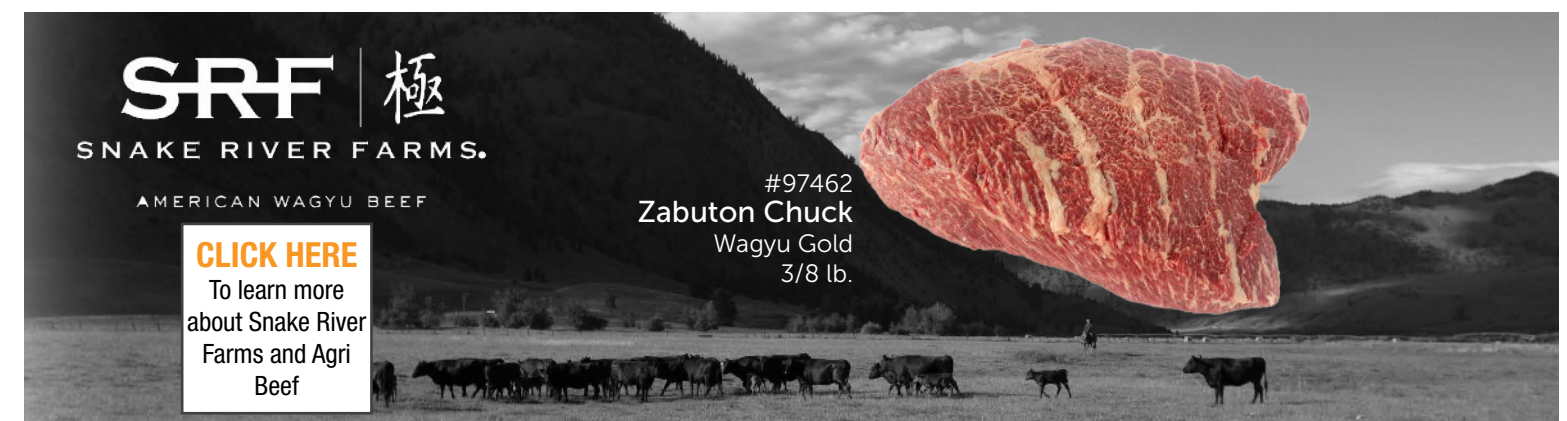
Item Code	Brand	Description	Pack Size
90106	ST. HELENS BEEF	BEEF TENDERLOIN PISMO, 5UP	12 : 7 LB
90118	ST. HELENS BEEF	BEEF HANGING TENDER	4 : 9 LB
90075	ST. HELENS BEEF	BEEF CLOUDS, XT	4 : 15 LB
90127	ST. HELENS BEEF	BEEF SIRLOIN TIP, PEELED (KNUCKLE)	6 : 10 LB
90085	ST. HELENS BEEF	BEEF BRISKET, 120	5 : 15 LB
97415	ST. HELENS BEEF	BEEF BRISKET, FLAT - SPECIAL ORDER	10 : 7 LB
97129	ST. HELENS BEEF	BEEF TERES MAJOR	4 : 16 LB
90143	ST. HELENS BEEF	BEEF SHORT RIB, PLATE, BONE-IN	6 : 10 LB
90247	ST. HELENS BEEF	BEEF EYE OF ROUND - SPECIAL ORDER	12 : 6 LB
97247	ST. HELENS BEEF	BEEF PECTORAL - SPECIAL ORDER	3 : 18 LB
90654	ST. HELENS BEEF	BEEF SIRLOIN FLAP - SPECIAL ORDER	4 : 13 LB
90107	ST. HELENS BEEF	BEEF INSIDE TOP ROUND, 1/4 TRIM	3 : 26 LB
90100	ST. HELENS BEEF	BEEF CULOTTE, PEELED	5 : 15 LB
90044	ST. HELENS BEEF	BEEF SHORT LOIN, XT OX1	3 : 22 LB
90095	ST. HELENS BEEF	BEEF FLAT IRON	12 : 6 LB
97422	ST. HELENS BEEF	BEEF TOP BUTT, XT	5 : 14 LB

## Double R Ranch Signature Beef (Top 1/3 of Choice Grade)

Item Code	Brand	Description	Pack Size
88007	DOUBLE R RANCH	BEEF TENDERLOIN PISMO CHOICE SIGNATURE	12 : 7 LB
90277	DOUBLE R RANCH	BEEF STRIPLOIN SIGNATURE, OX1	6 : 12 LB
97153	DOUBLE R RANCH	BEEF RIBEYE CHOICE SIGNATURE LIP-ON 17UP	4 : 18 LB
90182	AB FOODS	BEEF RIB 103 CHOICE SIGNATURE	1 : 30 LB

## Burger & Other Beef Products

Item Code	Brand	Description	Pack Size
4341	SCHAENDORF CATTLE	7 OZ GROUND BEEF PATTIES, MICHIGAN	24 : 7 OZ
97154	SNAKE RIVER FARMS	WAGYU GROUND BEEF CHUB	4 : 5 LB
90156	SNAKE RIVER FARMS	WAGYU BEEF FRANKFURTER, 5/1	1 : 10 LB
90087	ADA VALLEY	OVEN ROASTED BEEF POT ROAST	2 : 10 LB
91316	LOUIE'S MEATS	WHOLED CORNED BEEF BRISKET, RAW	2 : 9 LB
91311	LOUIE'S MEATS	TOP ROUND ROAST BEEF ROAST, COOKED	2 : 5 LB
88582	MEATS BY LINZ	BEEF SIRLOIN TIPS	1 : 10 LB



**SRF** | 極  
SNAKE RIVER FARMS.

AMERICAN WAGYU BEEF

**CLICK HERE**  
To learn more  
about Snake River  
Farms and Agri  
Beef

#97462  
Zabuton Chuck  
Wagyu Gold  
3/8 lb.

# PORK



**DeVries Meats** is a family-owned butcher shop and meat processing facility known for its high-quality, locally sourced meats. Serving the community since 1985, DeVries Meats specializes in farm-fresh beef, pork, and poultry, along with house-made sausages, smoked meats, and custom processing services. With a dedication to quality and customer satisfaction, DeVries Meats Inc. has built a strong reputation for providing premium cuts and exceptional service to West Michigan and beyond.

**CLICK HERE**  
To learn more about DeVries Meats

Item Code	Description	Pack Size
88542	SKIN OFF PORK BELLIES	4 : 10 LB
90189	FRENCHED PORK LOIN, CENTER-CUT, END RACK	4 : 10 LB
88514	BONELESS PORK BUTT	3 : 16 LB

## Value Added Pork

Item Code	Brand	Description	Pack Size
3566	CURLY'S	SMOKED PULLED PORK, SAUCELESS	2 : 5 LB
1841	FARMLAND	GOURND PORK	2 : 6 LB
11685	FARMLAND	FULLY COOKED BACON BITS, 1/4"	2 : 5 LB
2054	LOUIE'S MEATS	THICK SLICED PEPPER BACON	8 : 1.25 LB
3792	LOUIE'S MEATS	CANADIAN BACON	2 : 4 LB
91312	LOUIE'S MEATS	APPLEWOOD SMOKED BACK CURED SLAB	2 : 10 LB
90508	FONTANINI	ITALIAN SAUSAGE WITH GARLIC, BULK	4 : 5 LB
90514	FONTANINI	SMOKED CAJUN ANDOUILLE SAUSAGE	4 : 3 LBS
91179	FONTANINI	CHORIZO SAUSAGE, BULK	4 : 5 LB
6230	LOUIE'S MEATS	MAPLE BREAKFAST SAUSAGES	10 : 1 LB
44667	CARANDO	SLICED PROSCIUTTO, GAS FLUSHED	12 : 16 OZ
2692	ERMES FONTINA	PROSCIUTTO DELI LOAF	1 : 10.5 LB
33031	LUDINGTON MEAT CO.	HAMS, SEMI-BONELESS	2 : 23 LB
33022	LUDINGTON MEAT CO.	PEPPERED BACON, GRAND CHAMP, BULK	5 : 4.5 LB
33032	LUDINGTON MEAT CO.	HAMS, WHOLE, BONELESS	1 : 10 LB
33037	LUDINGTON MEAT CO.	HARDWOOD SMOKED BACON, 14-18, LAYERED	1 : 15 LB
33040	LUDINGTON MEAT CO.	HARDWOOD SMOKED BACON, 10-14, LAYERED	1 : 15 LB

## Kurobuta Pork

Item Code	Brand	Description	Pack Size
90148Z	KUROBUTA	BONE-IN PORK LOIN RACK, CENTER-CUT, FROZEN	4 : 8 LB
90200	KUROBUTA	PORK TENDERLOIN	5 : 5 LB

## Devries

Item Code	Brand	Description	Pack Size
3328	DEVRIES	LONG BONE PORK RACK	4 : 10 LB
3542	DEVRIES	FRESH PORK TENDERLOIN	1 : 10 LB
88514	DEVRIES	BONELESS PORK BUTT	3 : 16 LB
88515	DEVRIES	BONE-IN PORK BUTT	5 : 12 LB
88518	DEVRIES	BONELESS PORK LOIN, LIP OFF, CENTER-CUT	6 : 7 LB
88537	DEVRIES	BONE-IN PORK LOIN, CENTER-CUT	4 : 13 LB
88542	DEVRIES	SKIN OFF PORK BELLIES	4 : 10 LB
90189	DEVRIES	FRENCHED PORK LOIN, CENTER-CUT, END RACK	4 : 10 LB
88583Z	DEVRIES	BABY BACK RIBS, 2.5-3#, SKIN-OFF, FROZEN	8 : 3 LB

## Commodity Pork

Item Code	Brand	Description	Pack Size
90679	PACKER	BONELESS PORK BUTT	4 : 18 LB
90672	PACKER	BONELESS PORK LOIN, CENTER-CUT - SO	6 : 10 LB
6680	G&C	BABY BACK RIBS, 3#, FROZEN	10 : 3 LB



**BAO DOWN TO YOUR PORK BELLY**

MADE IN MICHIGAN

**DeVries**  
MEATS

**CLICK HERE**  
To learn more about DeVries Meats



#88542  
**Pork Bellies, Skin-Off**  
4/10 lb

# POULTRY



## Koch Foods

As a trusted supplier of Koch Foods products, we are proud to offer high-quality poultry solutions from one of the nation's leading chicken producers. Koch Foods is a fully integrated company, ensuring exceptional quality from hatchery to processing. Their diverse product range—including fresh, frozen, breaded, and fully cooked chicken—meets the demands of food service, retail, and international markets. With a reputation for excellence in taste, safety, and consistency, Koch Foods delivers the products you need to satisfy your customers.

**CLICK HERE**  
To learn more  
about Koch Foods

Item Code	Description	Pack Size
90265	B/S CHEF'S TRIM CHICKEN BREAST, 5 OZ	2 : 10 LB

## Premium-Trimmed Poultry

Item Code	Brand	Description	Pack Size
90265	KOCH	B/S CHEF'S TRIM CHICKEN BREAST, 5 OZ	2 : 10 LB
90264	KOCH	B/S CHEF'S TRIM CHICKEN BREAST, 6 OZ	2 : 10 LB
90579	KOCH	B/S IQF CHICKEN BREAST, 6 OZ	48 : 6 OZ
90575	KOCH	B/S IQF CHICKEN BREAST, 5 OZ	48 : 5 OZ
90865	KOCH	B/S PRESSED CHICKEN BREAST, 6 OZ	27 : 6 OZ



**CLICK HERE**  
To learn more  
about Maple Leaf  
Farms

## Maple Leaf Farms Duck

Item Code	Brand	Description	Pack Size
7017	MAPLE LEAF FARMS	ROASTED DUCK HALF, PARTIALLY BONED	12 : 15 OZ
90015	MAPLE LEAF FARMS	BONELESS DUCK BREAST, 7-9 OZ, SKIN-ON	1 : 24 CT
90057	MAPLE LEAF FARMS	RAW DUCK LEG & THIGH, 36 CT	1 : 20 LB

## Commodity Poultry

Item Code	Brand	Description	Pack Size
90407Z	G&C	CHICKEN WINGS, FROZEN	4 : 10 LB
6581	PACKER	JUMBO CHICKEN WINGS, IQF	2 : 5 LB

## Value Added Poultry

Item Code	Brand	Description	Pack Size
46190	FAIR MARKET	COOKED SHREDDED CHICKEN BREAST	5 : 6 LB
44701	BRAKEBUSH	BREADED CHICKEN TENDERS, RAW	2 : 5 LB
46071	TIP TOP POULTRY	DICED CHICKEN BREAST, 1/2"	1 : 10 LB



**CLICK HERE**  
To learn more  
about Koch Foods

## SPECIALTY MEATS



**CLICK HERE**  
To learn more  
about Pilot  
Brands

### Pilot Brands

Pilot Brands places great emphasis on the crucial aspects of delivering meticulously crafted, delectable grass-fed lamb. It's raised in a free-range environment and undergoes meticulous trimming with unparalleled attention to detail. It is then aged to ensure guaranteed tenderness before being promptly frozen to preserve its natural succulence. It boasts a delicate and mild flavor that showcases the finest qualities of grass-fed meat. Additionally, grass-fed lamb is naturally healthier, containing higher levels of omega-3 fatty acids, unsaturated fats, Vitamin E, protein, and other nutritional benefits compared to grain-fed lamb. With Pilot Brands, you can confidently serve delicious, grass-fed meats.

Item Code	Description	Pack Size
90094	LAMB HIND SHANK AUST HALAL	1 : 35 LB
90144	LAMB RIB CUTLET 2 OZ AVG FRENCHED HALAL - SPECIAL ORDER	1 : 28 LB
90224	LAMB RACKS IMP 12-14OZ FRENCHED HALAL - SPECIAL ORDER	1 : 25 LB

### Pilot Brands Lamb

Item Code	Brand	Description	Pack Size
90094	PILOT	LAMB HIND SHANK AUST HALAL	1 : 35 LB
90144	PILOT	LAMB RIB CUTLET 2 OZ AVG FRENCHED HALAL - SPECIAL ORDER	1 : 28 LB
90224	PILOT	LAMB RACKS IMP 12-14OZ FRENCHED HALAL - SPECIAL ORDER	1 : 25 LB
90371	PILOT	VEAL BONES	1 : 50 LB
90459	PILOT	LAMB FRENCHED RACK IMP 14-16 OZ HALAL	1 : 25 LB
90465	PILOT	LAMB AUSTRALIAN RACK 26-30OZ 12PC HALAL	1 : 20 LB
90468	PILOT	LAMB LEG BRN AUSTRALIAN HALAL	5 : 6 LB
90473	PILOT	LAMB NZ TOP SIRLOIN 5-7 OZ HALAL - SPECIAL ORDER	1 : 12 LB
91215	PILOT	LAMB GROUND NEW ZEALAND HALAL	4 : 2.5LB



### FOCUSED ON EXCELLENCE

- Grass fed, free range lamb
- Aged for guaranteed tenderness
- Delicate, mild flavor
- Naturally healthy with omega-3 fatty acids, Vitamin E, and more



# RIVER CITY MEATS

Since 1982, we have taken a customized approach to how we process and distribute our fresh meat offerings to our customers. From this solution-based mentality, our River City Meats (RCM) brand was born. The River City Meats name is now synonymous with consistent, high-quality meats that have exceptional taste.

Driven to exceed our customers' expectations, the River City Meat cut-to-order program takes a personalized approach that is unmatched in the industry. Our quality standards are second to none with an intention and commitment to sustainability and animal well-being. From the meticulous care of cattle to the precise meat cutting and processing at our Grand Rapids, Michigan facility, it's by no accident that our steaks are the best in class when it comes to quality and flavor.

Contact your Superior sales representative and follow the QR code to find out more about our current offerings.

**CLICK HERE**  
To learn more  
about River City  
Meats





## **Superior Foods Company**

*www.SuperiorFoods.co • 4243 Broadmoor Ave. SE, Grand Rapids, MI 49512 • 616.698.7700*

---

*This catalog contains featured items from specific product categories. These items don't represent the entire product category. They are only highlighted items from a specific product type. Contact your sales representative for additional information about any products listed or any product categories in this catalog.*

*Items listed are subject to change and availability.*